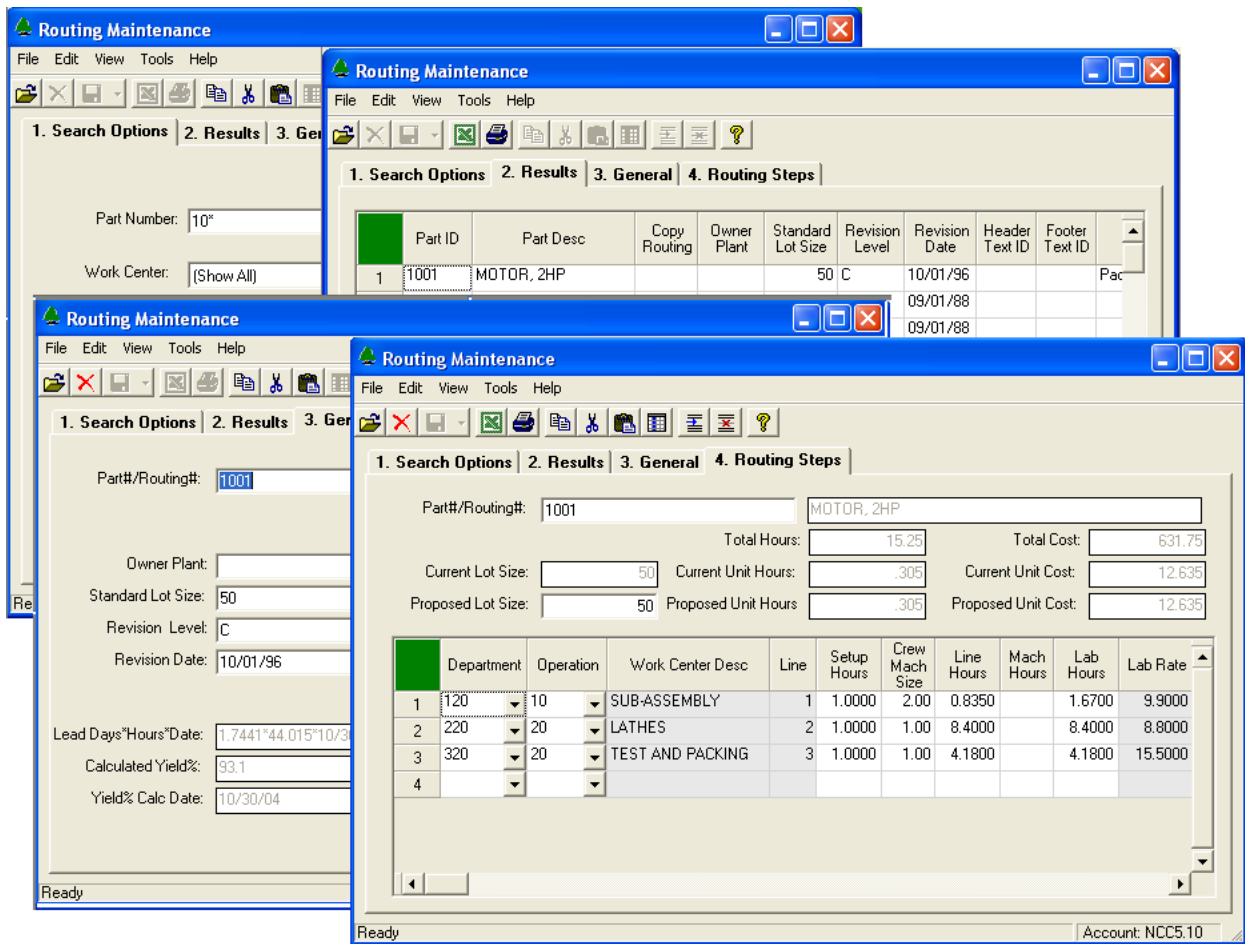


Web and Desktop Applications for Manfact



- View, create and modify Routing records in your Manfact system
- Perform “what if” analysis. The Routing Maintenance procedure will allow the user to enter different lot sizes and view the impact of the lot sizes on both cost and lead-time
- Search for Routing records by part number or work center

We Specialize in:
ManFact[™]
by Epicor

NorthClark Computing, Inc.
PO Box 2096
Oregon City, OR 97045

Phone: 503.632.5671
Fax: 503.632.5688
Email: info@northclark.com
Web: www.northclark.com



ERP Consulting, Custom Programming Solutions,
Web & Desktop Applications for Manfact

PO BOX 2096
Oregon City, OR 97045

Phone: 503.632.5671
Fax: 503.632.5688
Email: info@northclark.com

www.northclark.com