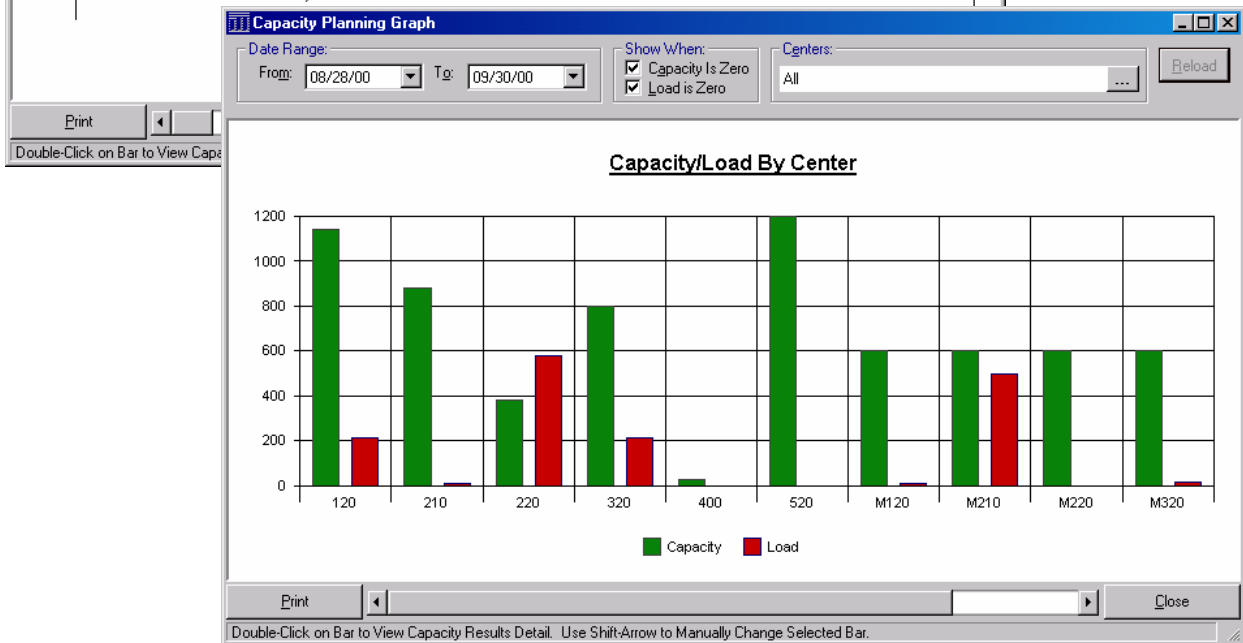
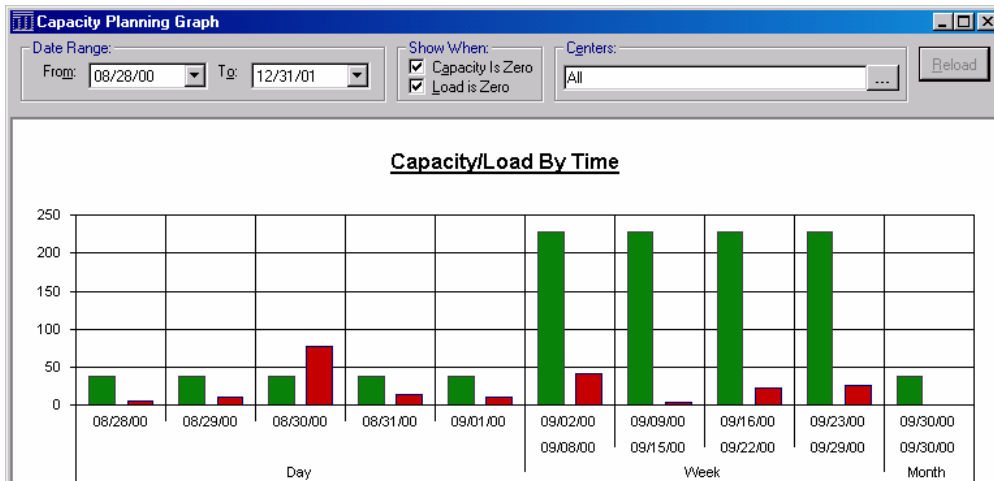


## *Web and Desktop Applications for Manfact*



*We Specialize in:*  
**ManFact**<sup>™</sup>  
by Epicor

NorthClark Computing, Inc.  
PO BOX 2096  
Oregon City, OR 97045

Phone: 503.632.5671  
Fax: 503.632.5688  
Email: info@northclark.com  
Web: www.northclark.com

# Features Summary

- Manage the Production Schedule
- Identify Over/Under Utilized Resources
- Automatically Update Work Orders with Revised Schedule Dates
- Improve MRP Accuracy
- Improve Customer Service Levels
- Optimize Shop Floor Performance
- Reduce Excess Inventory
- Include Work Orders, MRP Planned Orders, Project Budgets and Miscellaneous Tasks in the Schedule
- Group Work Centers and Resources into User-defined “Capacity Centers”
- Analyze both Labor and Machine Constraints
- Enter Exceptions to the Calendar Such as Planned Overtime or Abnormal Shut-Down Days
- Five New Operation Scheduling Methods
- Automatically Post Updated Schedule Dates and ETC Hours to Manufact Work Orders and Projects
- Define Predecessor / Successor Relationships Between Tasks and/or Work Orders
- Includes Graphing, Printing, and Excel Export Features



**Capacity Planning**

File Edit View Processing Tools Graph Help

Schedule Operations Cap. Centers Resources Override Cap. Results Load Detail

	>	Top-Level Project/Group	Type	Task Identifier	Description	Assembly Number	Status	Schedule Method
1	0	9905-100	Project	9905-100	Precision Instruments		Released	Forward From WO/Task Start
2	1	9905-100	Project	100	Solenoid Valve		Released	Forward From WO/Task Start
3	1	9905-100	Project	100.1	Estimating and Proposal		Released	Forward From WO/Task Start
4	2	9905-100	Work Order	10	ROTOR ASSEMBLY	2002	BackOrd	Forward From WO/Task Start
5	2	9905-100	Work Order	12	CLUTCH ASSEMBLY	1002	BackOrd	Backward From WO/Task Due
6	1	9905-100	Project	100.2	Contract Signing		Released	Forward From WO/Task Start

Database: C:\Perr\Perr\B\NCC\_CapPlan\New.mdb

**Capacity Planning**

File Edit View Processing Tools Graph Help

Schedule Operations Cap. Centers Resources Override Cap. Results Load Detail

	>	Top-Level Project/Group	Type	Task Identifier	Setup Hours	Run + Rwk Hrs	Mach. Hours	Line Hours	Actual Labor	Actual Mach.	ETC Labor	ETC Mach.	ETC Line	% Comp	Queue Time	Move Time
1	0	9905-100	Project	9905-100	4.80	531.18	0.00	535.98	8.00	0.00	527.98	0.00	527.98	1%	48.00	32.00
2	1	9905-100	Project	100	0.00	120.00	0.00	120.00	0.00	0.00	120.00	0.00	120.00	0%	0.00	0.00
3	1	9905-100	Project	100.1	4.80	89.18	0.00	93.98	8.00	0.00	85.98	0.00	85.98	9%	48.00	32.00
4	2	9905-100	Work Order	10	2.80	32.06	0.00	34.86	8.00	0.00	26.86	0.00	26.86	23%	24.00	16.00
5	2	9905-100	Work Order	12	2.00	57.12	0.00	59.12	0.00	0.00	59.12	0.00	59.12	0%	24.00	16.00
6	1	9905-100	Project	100.2	0.00	120.00	0.00	120.00	0.00	0.00	120.00	0.00	120.00	0%	0.00	0.00
7	1	9905-100	Project	100.3	0.00	40.00	0.00	40.00	0.00	0.00	40.00	0.00	40.00	0%	0.00	0.00

00 40.00 0% 0.00 0.00  
 00 20.00 0% 0.00 0.00  
 00 40.00 0% 0.00 0.00  
 00 10.00 0% 0.00 0.00  
 00 60.00 0% 0.00 0.00  
 00 60.00 0% 0.00 0.00  
 00 32.00 0% 0.00 0.00  
 00 32.00 0% 0.00 0.00  
 00 16.00 0% 0.00 0.00  
 00 65.00 38% 24.00 36.00  
 00 4.43 0% 32.00 16.00

05.5 | Need Reschedule | Calculate Capacity

**Capacity Planning**

File Edit View Processing Tools Graph Help

Schedule Operations Cap. Centers Resources Override Cap. Results Load Detail

Task: Work Order: 10 Method: Forward From WO/Task Start  
 Desc: ROTOR ASSEMBLY Start: 9/2/2000 Due: 9/7/2000

Operation	Schedule Method	Schedule Start Date	Schedule Due Date	Work Days	Qty	Labor or Machine	Crew Size	Setup Hours	Run + Rwk Hrs	Mach. Hours	Line Hours	Actual Labor	Actual Mach.	ETC Labor	ETC Mach.	E	
1	120*20	Alter Prior Oper Complete	09/02/00	09/05/00	2.4	140	Labor	1	2.00	21.98	0.00	23.98	8.00	0.00	15.98	0.00	1
2	120*20	Alter Prior Oper Complete	09/05/00	09/06/00	0.9	140	Labor	1	0.50	6.44	0.00	6.94	0.00	0.00	6.94	0.00	1
3	320*10	Alter Prior Oper Complete	09/06/00	09/07/00	0.9	140	Labor	1	0.30	3.64	0.00	3.94	0.00	0.00	3.94	0.00	1

Reschedule Task

Database: C:\Perr\Perr\B\NCC\_CapPlan

**Capacity Planning**

File Edit View Processing Tools Graph Help

Schedule Operations Cap. Centers Resources Override Cap. Results Load Detail

Machine Capacity Center: M210 - Dept. 210 For Period: 09/02/00 - 09/08/00

Top-Level Project/Group	Project Number	Type	Order Number	Description	Assembly Number	Work Center or Resource	Seq#	Labor Hours	Machine Hours	Start Date	Due Date
1	MAGTORS	MRP	39	STATOR MACHINED	3005	210*20	1	2	100	08/29/00	09/07/00
2	MAGTORS	MRP	40	STATOR MACHINED	3005	210*20	1	1	100	08/29/00	09/07/00
3	MAGTORS	MRP	41	STATOR MACHINED	3005	210*20	1	1	100	08/29/00	09/07/00
4	MAGTORS	MRP	42	STATOR MACHINED	3005	210*20	1	1	100	08/29/00	09/07/00

**Capacity Planning**

File Edit View Processing Tools Graph Help

Schedule Operations Cap. Centers Resources Override Cap. Results Load Detail

Capacity Center	Description	Labor or Machine	Period	From Date	To Date	Total Capacity	Total Load	Variance	
1	M210	Dept. 210	Machine	Week	09/02/00	09/08/00	120	400	-280
2	220	Dept. 220	Labor	Day	08/28/00	08/28/00	15	168	-152
3	320	Dept. 320	Labor	Day	08/28/00	08/28/00	32	106	-74
4	220	Dept. 220	Labor	Day	08/30/00	08/30/00	15	80	-65
5	120	Dept. 120	Labor	Day	08/30/00	08/30/00	38	78	-40
6	220	Dept. 220	Labor	Day	08/31/00	08/31/00	15	52	-37
7	220	Dept. 220	Labor	Day	09/01/00	09/01/00	15	51	-36
8	220	Dept. 220	Labor	Day	08/29/00	08/29/00	15	42	-27
9	220	Dept. 220	Labor	Week	09/02/00	09/08/00	76	96	-20
10	220	Dept. 220	Labor	Week	09/09/00	09/15/00	76	79	-3
11	210	Dept. 210	Labor	Month	09/30/00	09/30/00	0	0	0
12	220	Dept. 220	Labor	Month	09/30/00	09/30/00	0	0	0
13	320	Dept. 320	Labor	Month	09/30/00	09/30/00	0	0	0
14	400	Dept. 400	Labor	Month	09/30/00	09/30/00	0	0	0
15	520	Dept. 520	Labor	Month	09/30/00	09/30/00	0	0	0
16	M120	Dept. 120	Machine	Month	09/30/00	09/30/00	0	0	0
17	M210	Dept. 210	Machine	Month	09/30/00	09/30/00	0	0	0
18	M220	Dept. 220	Machine	Month	09/30/00	09/30/00	0	0	0

Double-Click a Row to View Load Detail Account: MDEM055

**Post Schedule Changes to Manfact**

Click OK to Update the Manfact System With the Changes You Have Made to the Schedule.

Here is What I Want to Update:

- Project Start and Due Dates
- Project Budget Labor Hours
- Project Budget Labor Amounts
- Work Order Start and Due Dates
- Work Order Scheduling Methods
- Work Order Routing Hours (Actual Cost Only)

OK Cancel



ERP Consulting, Custom Programming Solutions,  
Web & Desktop Applications for Manfact

PO BOX 2096  
Oregon City, OR 97045

Phone: 503.632.5671  
Fax: 503.632.5688  
Email: [info@northclark.com](mailto:info@northclark.com)

[www.northclark.com](http://www.northclark.com)